



North Hennepin
Community College

NHCC MLT to SCSU MLS Partnership Overview



**A Perfect Blend of
Science, Medicine and Biotechnology**



www.LabScience.org

St. Cloud State University Contact:

Louise Millis, Associate Professor Biology, MS, MLS(ASCP)cm

- Biology Faculty: St. Cloud State University (SCSU)
- Advisor: Medical Laboratory Science 3+1 Bachelor's Program
- Program Director: Medical Laboratory Science 2+2 Completion Program
- Program Director: Histotechnician Certificate

North Hennepin Community College Contact:

Ashley Martin, Medical Laboratory Technology Faculty, MA

Have you ever wondered

- How do doctors diagnose disease?
- How do the results from the many specimens sent to medical laboratories provide diagnostic information on patient care?
- Answer: Careers in the Clinical Laboratory

Do you see yourself here?



American Society for American Society for Clinical Pathology (ASCP), Chicago, IL
Clinical Pathology (ASCP), Chicago, IL

Who Works in a Clinical Laboratory?

Post HS	Phlebotomist (PBT)*
Associate (2 yr. degree)	Medical Laboratory Technician (MLT)*
	Histotechnician (HT)**
Baccalaureate (4 yr. degree)	Medical Laboratory Scientist (MLS)***
	Cytotechnologist (CT)
	Histotechnologist (HTL)
Masters, PhD, MD	Directors, Managers, Coordinators

*Program are available by NHCC

**Certificate being offered by SCSU starting fall 2020

***Program offered by SCSU

Where Do Clinical Laboratory Professionals Work?

- Hospital Laboratory
- Physician Office Laboratory
- Public Health Laboratory
- Commercial or Reference Laboratory
- Fertility Clinic
- Pharmaceutical & Chemical Industries
- Biotechnology Companies
- Research & Teaching Institutions
- Veterinary Laboratory
- Cosmetic & Food Industry
- Government Agencies

Career Advancement

- Medicine
- Dentistry
- Public Health
- Biomedical Technology
- Health Care Management & Administration
- Medical Informatics
- Basic Science & Research
- Sales, Marketing, Product Development
- Law & Public Advocacy
- Education
- Many others

Why Consider a Career in the Clinical Laboratory?

- Clinical laboratory professionals are in high demand
- Exciting and rewarding profession
- Multiple & flexible career opportunities
- Transferable skills to advance your career
- Flexible work schedule
- Competitive wages

St Cloud State University (SCSU)

Medical Laboratory Science

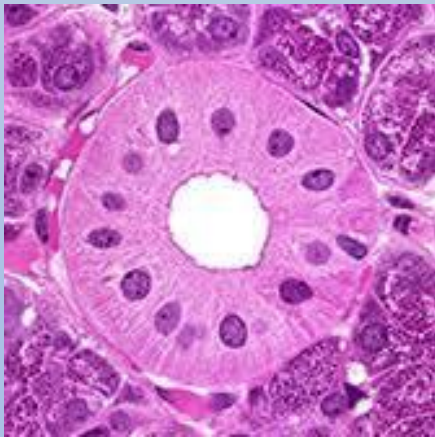
Bachelor of Science (BS)

- 3+1 Traditional Program: Run on SCSU campus
 - 3 years of college course work + 9 to 11 month clinical internship
- 2+2 Completion Program: RUN ON THE NHCC CAMPUS
 - Student returns to school after completing a Medical Laboratory Technician (MLS) 2 year degree
 - 2 years of course work that includes the clinical internship (students must be employed as an MLT)

St Cloud State University (SCSU)

Histotechnician Certificate

- New program
- Starting Fall 2020
- Requires a 2 or 4 year degree in Biology, Chemistry, MLT, or MLS

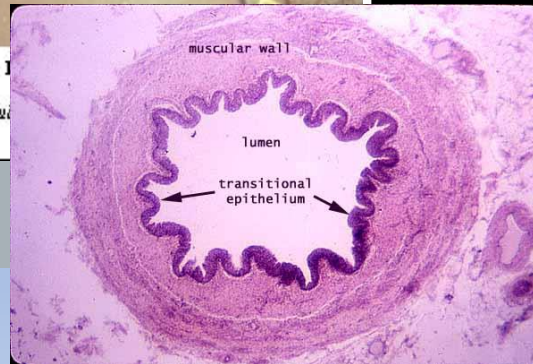
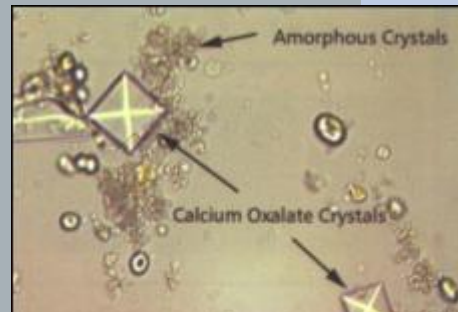
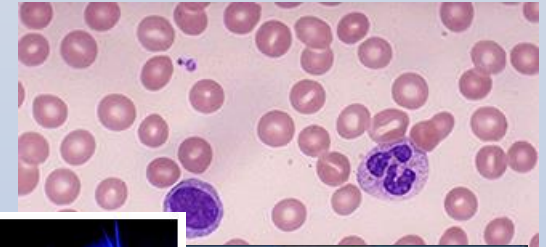
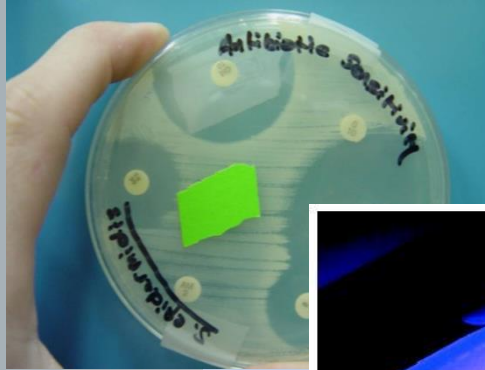


Education

- Clinical laboratory professionals have both academic and hospital laboratory training
- Programs a blend of didactic and student lab course work plus clinical internships

Departments of the Clinical Laboratory

- Immunohematology
- Microbiology
- Hematology
- Toxicology
- Chemistry
- Forensics
- Molecular
- Urinalysis
- Histology
- others



http://www.nwcancer.com/uploads/images/hematology/pt_svc_hematology_normal.jpg

<http://www.heart-valve-surgery.com/Images/blood-bag.jpg>

http://faculty.unlv.edu/wmojica/index352X_image002.jpg

http://www.biologyreference.com/images/biol_02_img0140.jpg

<http://www.siumed.edu/~dking2/erg/images/RE047b.jpg>

<http://www.nyhq.org/images/Upload/chemistry.jpg>

MLT and MLS

Professionals who:

- Analyze blood, body fluids, tissues, and cells to determine the presence or absence of disease
- Identify bacteria, parasites, and other microorganisms
- Assay the chemical content of fluids
- Match blood for transfusions
- Assess levels of therapeutic drugs in the blood
- Utilize the latest in biomedical techniques and instrumentation

Vital Work

- Important member of the health care team – 3rd largest group of health professionals
- Responsible for 70% to 80% of all diagnostic and treatment decisions made by physicians
- Over 7 billion clinical lab tests performed annually
- Modern medicine could not function without clinical laboratory professionals
- "If we disappeared for a day or two, health care would grind to a halt (Dr. Wells*)."

National Employment Outlook MLT & MLS – HIGHER IN MN

- Employment (2016) 335,700 jobs
- Median wage (2016) \$38,950 (MLT) & \$61,070 (MLS)
- Projected growth (2016-2026) +13% MLT & MLS
- Projected annual job openings (2016-2026) 42,700
- MLS ranked 24th MLT ranked 17th in job satisfaction (Bureau of Labor Statistics – Top 200)

•http://www.bls.gov/oes/current/oes_mn.htm#29-0000

•<http://www.careercast.com/jobs-rated/best-jobs-2014>

Certification & Beyond

- Completion of NAACLS accredited program didactic courses + clinical internship
- Certification Exam
- Continuing Education

Chose a Career that wants you

- Do you see yourself here?



- We see you here.

Questions?

- **We have answers!**
- **Give us a call, an email (best), or just stop by**

SCSU - Wick 269 [:lmillis@stcloudstate.edu](mailto:lmillis@stcloudstate.edu), 320-308-5438

NHCC - BHCC 235 [:lmillis@nhcc.edu](mailto:lmillis@nhcc.edu), 763-424-0963

Further Information

- American Society for Clinical Pathology

<https://www.ascp.org/content/careers>

- National Accrediting Agency for Clinical Laboratory Science

<https://naaccls.org/>

- American Society for Clinical Laboratory Science

<https://careercenter.ascls.org/>